

EOSINOPHILIC COPD
CHRONIC OBSTRUCTIVE
PULMONARY DISEASE

Approved Use: NUCALA is an add-on, prescription maintenance treatment of eosinophilic chronic obstructive pulmonary disease (COPD) in adults whose disease is not controlled. NUCALA is not used to treat sudden breathing problems.

Nucala 
(mepolizumab)
Injection 100 mg/mL

ONCE-MONTHLY* NUCALA

**NOW APPROVED
FOR COPD**

**STRUGGLING WITH COPD SYMPTOMS?
DISCOVER A NEW TREATMENT OPTION.**

*Every 4 weeks.

Important Safety Information

Do not use NUCALA if you are allergic to mepolizumab or any of the ingredients in NUCALA. Do not use to treat sudden breathing problems.

NUCALA can cause serious side effects, including:

- **allergic (hypersensitivity) reactions, including anaphylaxis.** Serious allergic reactions can happen after you get your NUCALA injection. Allergic reactions can sometimes happen hours or days after you get a dose of NUCALA. Tell your healthcare provider or get emergency help right away if you have any of the following symptoms of an allergic reaction: swelling of your face, mouth, and tongue; breathing problems; fainting, dizziness, feeling lightheaded (low blood pressure); rash; hives.
- **herpes zoster infections** that can cause shingles have happened in people who received NUCALA.

Please see additional Important Safety Information throughout.

Please see full [Prescribing Information](#), including [Patient Information](#), for NUCALA at NUCALA.com.

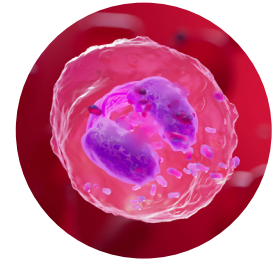
MAYBE IT'S A DIFFERENT KIND OF COPD

If you or a loved one are struggling with COPD flare-ups, even on maintenance inhaler treatment, this could mean that your COPD symptoms are uncontrolled. This may be due to something that's naturally happening inside the body.

Eosinophils (ee-uh-sin-uh-fils), which are normal white blood cells, are a key source of inflammation in the lungs that could be contributing to flare-ups. For those who have COPD with high levels of blood eosinophils, it may be eosinophilic COPD.

FACT: About 40%* of people with COPD have elevated levels of blood eosinophils

*34-49%



KEY SOURCE
EOSINOPHILS

EOSINOPHILIC COPD = A DIFFERENT KIND OF COPD

SIGNS OF A COPD FLARE-UP



Reduced activity



**More frequent use
of a rescue inhaler**



A hospital/ER visit



**An oral steroid/antibiotic
treatment**

YOUR NEXT **STEP?**

If this sounds familiar, it might be time to have a **different conversation with your specialist**. Ask about simple blood testing to measure your eosinophil levels.

Important Safety Information (cont'd)

Before receiving NUCALA, tell your healthcare provider about all of your medical conditions, including if you:

- are taking oral or inhaled corticosteroid medicines. **Do not** stop taking your other medicines, including your corticosteroid medicines, unless instructed by your healthcare provider because this may cause other symptoms to come back.
- have a parasitic (helminth) infection.
- are pregnant or plan to become pregnant. It is not known if NUCALA may harm your unborn baby.

Please see additional Important Safety Information throughout.

Please see full **Prescribing Information**, including **Patient Information**, for NUCALA at [NUCALA.com](https://www.nucala.com).

NUCALA IS A DIFFERENT KIND OF COPD TREATMENT

It's not an inhaler or a steroid. NUCALA is the first and only once-monthly* biologic for eosinophilic COPD. It works by targeting and reducing blood eosinophils, which may help reduce airway inflammation.[†] Less inflammation could mean fewer flare-ups.

What's a biologic? Biologics are treatments derived from natural sources and are used to help target key causes of many conditions, like eosinophils in COPD.

*Every 4 weeks.

[†]It is not fully understood how NUCALA works.

HERE'S WHAT ADDING NUCALA COULD DO FOR YOU



LESS flare-ups

Results may vary.



LESS hospitalizations due to flare-ups[†]

Results may vary.

[†]Based on the limits of the study, this result is descriptive.



LESS total doses per year vs other COPD biologic[§]

**No comparative efficacy or safety conclusions
can be drawn from this information.**

[§]Every 4 weeks vs every other week.

SO, WHAT'S A FLARE-UP?

Flare-ups (or exacerbations) are when symptoms get so bad you may need additional treatments—like antibiotics or steroids—or even a trip to the hospital. Just one flare-up can decrease your lung function, so finding the right treatment for your COPD is important.

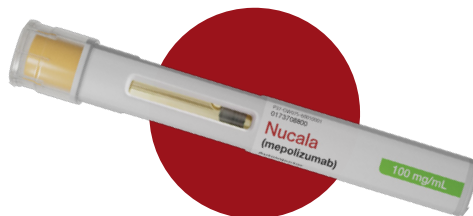
Important Safety Information (cont'd)

Before receiving NUCALA, tell your healthcare provider about all of your medical conditions, including if you (cont'd):

- are breastfeeding or plan to breastfeed. You and your healthcare provider should decide if you will use NUCALA and breastfeed. You should not do both without talking with your healthcare provider first.
- are taking prescription and over-the-counter medicines, vitamins, and herbal supplements.

The most common side effects of NUCALA include: headache, injection site reactions (pain, redness, swelling, itching, or a burning feeling at the injection site), back pain, tiredness (fatigue). Diarrhea and cough have been reported with COPD.

**Please see additional Important Safety Information throughout.
Please see full [Prescribing Information](#), including [Patient Information](#),
for NUCALA at [NUCALA.com](#).**



WHEN IT COMES TO TREATING EOSINOPHILIC COPD, YOU HAVE OPTIONS

NUCALA Autoinjector at home

When it comes to your COPD treatment, convenience is key. You can take the NUCALA Autoinjector at home—just once a month.* Want to see how easy the Autoinjector could be for you to use?† Visit [NUCALA.com](https://www.nucala.com).

*Every 4 weeks.

†Severe asthma patients rated the Autoinjector as easy-to-use after training. [See full Instructions for Use.](#)

At home not for you? No problem.

You can get your NUCALA injections at your specialist's office every 4 weeks.

Just know, it's important to monitor for serious allergic reactions after injection, either in your specialist's office or at home. Sometimes serious allergic reactions, including anaphylaxis, can happen hours or days after you get your NUCALA injection.

WHAT'S NEXT?

Find out if NUCALA is right for your kind of COPD. Ask your specialist about simple blood testing to measure eosinophil levels.

Important Safety Information

Do not use NUCALA if you are allergic to mepolizumab or any of the ingredients in NUCALA. Do not use to treat sudden breathing problems.

NUCALA can cause serious side effects, including:

- **allergic (hypersensitivity) reactions, including anaphylaxis.** Serious allergic reactions can happen after you get your NUCALA injection. Allergic reactions can sometimes happen hours or days after you get a dose of NUCALA. Tell your healthcare provider or get emergency help right away if you have any of the following symptoms of an allergic reaction: swelling of your face, mouth, and tongue; breathing problems; fainting, dizziness, feeling lightheaded (low blood pressure); rash; hives.
- **herpes zoster infections** that can cause shingles have happened in people who received NUCALA.

Please see additional Important Safety Information throughout. Please see full [Prescribing Information](#), including [Patient Information](#), for NUCALA at [NUCALA.com](https://www.nucala.com).

Nucala 
(mepolizumab)
Injection 100 mg/mL

BE PREPARED FOR YOUR NEXT COPD APPOINTMENT

To get you started, here are some questions to keep in mind. Your answers can help you and your specialist decide if adding NUCALA could be your next move.

1 Over the past year, how have COPD flare-ups affected your day-to-day?

Why it matters: Doing things like calling out of work or canceling plans due to flare-ups may mean your COPD symptoms aren't under control. Since COPD can progress, it may not be disrupting your daily life right now, but that could change.

2 How often do you use a rescue inhaler?

Why it matters: Flare-ups can lead to more frequent use of a rescue inhaler. This could be a sign of uncontrolled COPD symptoms, and your specialist may ask you to do simple blood testing to help determine if it's eosinophilic COPD.

3 How many times have you taken an oral steroid or antibiotic for COPD flare-ups over the past year?

Why it matters: Needing an oral steroid or antibiotic to deal with flare-ups could suggest that your COPD symptoms are uncontrolled. But you don't have to settle—adding NUCALA to your maintenance treatment could help prevent flare-ups. Results may vary.

4 How many COPD-related hospital or ER visits have you had in the last year?

Why it matters: Going to the hospital or ER once or more in a year because of COPD flare-ups could indicate that something else may be going on—such as eosinophilic COPD.

5 Have you had simple blood testing to measure eosinophil levels?

Why it matters: If your specialist hasn't done simple blood testing to measure your eosinophil levels, now's the time. It can help your specialist determine if you have eosinophilic COPD and if NUCALA is right for you.

Important Safety Information (cont'd)

Before receiving NUCALA, tell your healthcare provider about all of your medical conditions, including if you:

- are taking oral or inhaled corticosteroid medicines. **Do not** stop taking your other medicines, including your corticosteroid medicines, unless instructed by your healthcare provider because this may cause other symptoms to come back.
- have a parasitic (helminth) infection.
- are pregnant or plan to become pregnant. It is not known if NUCALA may harm your unborn baby.

Please see additional Important Safety Information throughout.

Please see full [Prescribing Information](#), including [Patient Information](#), for NUCALA at [NUCALA.com](https://www.nucala.com).

NEED HELP PAYING FOR NUCALA?

Once you or a loved one have been prescribed NUCALA, out-of-pocket cost shouldn't be a barrier to starting or staying on treatment. Explore potential savings and check your eligibility.

Commercially insured?

PAY AS LITTLE AS \$0 FOR NUCALA.

Subject to program maximums.*

APPLY NOW

*The NUCALA Copay Program helps eligible commercially insured patients with their eligible out-of-pocket costs for NUCALA up to \$9,450 annually. Visit www.GSKCopayPrograms.com for information about additional program limitations and full program terms and conditions.

Uninsured or have Medicare?

With the [GSK Patient Assistance Program](#),[†] you may be eligible to get NUCALA free of charge. Restrictions apply.

[†]The GSK Patient Assistance Program is offered by GSK PAP Foundation.

MYNUCALA RESOURCES GO A LONG WAY

Get help every step of the way with **MyNUCALA** support resources:

- Get answers to your questions about NUCALA
- Explore insurance coverage and affordability options
- Understand your eligibility for financial assistance
- Tips and tools for working with your specialty pharmacy
- Refill text reminders

To join **MyNUCALA** now, visit MyNUCALA.com. Have some more questions? Call [1-844-4-NUCALA](tel:1-844-4-NUCALA).

Important Safety Information (cont'd)


Before receiving NUCALA, tell your healthcare provider about all of your medical conditions, including if you (cont'd):

- are breastfeeding or plan to breastfeed. You and your healthcare provider should decide if you will use NUCALA and breastfeed. You should not do both without talking with your healthcare provider first.
- are taking prescription and over-the-counter medicines, vitamins, and herbal supplements.

Please see additional Important Safety Information throughout.

Please see full [Prescribing Information](#), including [Patient Information](#), for NUCALA at NUCALA.com.

MEET A DIFFERENT KIND OF TREATMENT FOR A DIFFERENT KIND OF COPD

Nucala 
(mepolizumab)
Injection 100 mg/mL

It's not an inhaler or a steroid. NUCALA is the first and only once-monthly* biologic for eosinophilic COPD. NUCALA works by targeting and reducing eosinophils—a key source of inflammation in your lungs that could be contributing to flare-ups.†

*Every 4 weeks.

†It is not fully understood how NUCALA works.

WHAT COULD ADDING NUCALA MEAN FOR YOU?



LESS flare-ups



LESS hospitalizations
due to flare-ups†

Results may vary.

†Based on the limits of the study, this result is descriptive.



LESS total doses per year
vs other COPD biologic§

No comparative efficacy or safety conclusions
can be drawn from this information.

§Every 4 weeks vs every other week.

**DON'T
WAIT**

Ask your specialist about simple blood testing to measure eosinophil levels.
Find out if NUCALA is right for your kind of COPD.

VISIT [NUCALA.COM/COPD](https://www.nucala.com/COPD) FOR MORE INFORMATION.

Important Safety Information (cont'd)

The most common side effects of NUCALA include: headache, injection site reactions (pain, redness, swelling, itching, or a burning feeling at the injection site), back pain, tiredness (fatigue). Diarrhea and cough have been reported with COPD.

You are encouraged to report negative side effects of prescription drugs to the FDA. Visit www.fda.gov/medwatch or call **1-800-FDA-1088**. You may also report negative side effects to GSK at gsk.publicreportum.com or **1-888-825-5249**.

If you don't have prescription coverage and can't afford your medicines, call **1-844-4-NUCALA (1-844-468-2252)**.

Please see additional Important Safety Information throughout.

Please see full [Prescribing Information](#), including [Patient Information](#), for NUCALA at [NUCALA.com](https://www.nucala.com).

Trademarks are owned by or licensed to the GSK group of companies.

©2025 GSK or licensor.
PMUS-MPLBROC240017 May 2025
Produced in USA. 0002-0035-54

Nucala } **GSK**
(mepolizumab)